

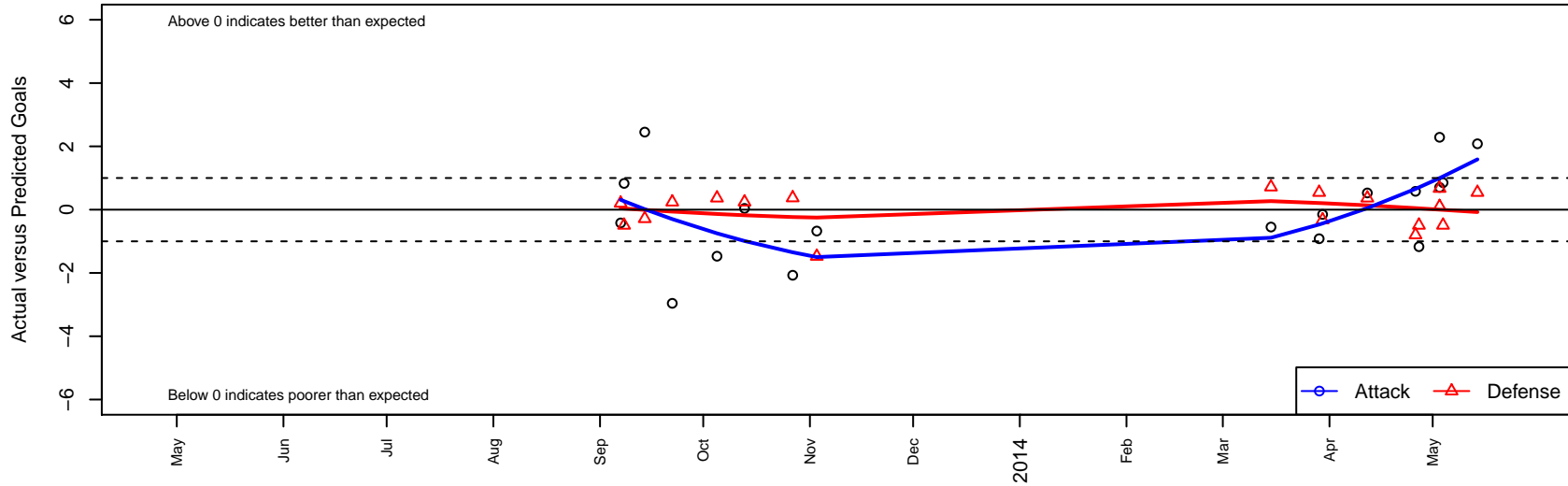
# Solar Chelsea SC ECNL G99

Venues played:  
ECNL U14

G99 total strength=1819  
 attack=28.08 defense=41.7  
 alt names used:  
 Solar Chelsea Soccer Club ECNL U14



**Solar Chelsea SC ECNL G99**  
 Dots are actual minus expected GF (blue circles) and GA (red triangles).  
 Blue line is smoothed change in attack strength. Red is smoothed change in defense strength.



	<b>date</b>	<b>home</b>		<b>away</b>		<b>venue</b>	<b>pred.home</b>	<b>pred.away</b>
17051	2014-05-14	Solar Chelsea SC ECNL G99	3	Dallas Texans ECNL G99	0	ECNL U14	0.92	0.543
16991	2014-05-04	SLSG-Metro ECNL G99	1	Solar Chelsea SC ECNL G99	3	ECNL U14	0.51	2.148
16916	2014-05-03	Real Colorado ECNL G99	0	Solar Chelsea SC ECNL G99	2	ECNL U14	0.67	1.297
16938	2014-05-03	Solar Chelsea SC ECNL G99	5	Sereno SC ECNL G99	0	ECNL U14	2.71	0.099
16885	2014-04-27	Solar Chelsea SC ECNL G99	1	Texas Rush ECNL G99	1	ECNL U14	2.17	0.507
16822	2014-04-26	Solar Chelsea SC ECNL G99	3	Challenger SC ECNL G99	1	ECNL U14	2.42	0.202
16683	2014-04-12	AHFC ENCL G99	0	Solar Chelsea SC ECNL G99	2	ECNL U14	0.37	1.471
16518	2014-03-30	Solar Chelsea SC ECNL G99	2	FC Dallas ECNL G99	1	ECNL U14	2.15	0.676
16467	2014-03-29	Dallas Texans ECNL G99	0	Solar Chelsea SC ECNL G99	0	ECNL U14	0.54	0.918
16300	2014-03-15	Solar Chelsea SC ECNL G99	1	D'Feeters SC ECNL G99	0	ECNL U14	1.55	0.715
15140	2013-11-03	Lonestar SC ECNL G99	2	Solar Chelsea SC ECNL G99	0	ECNL U14	0.52	0.676
14960	2013-10-27	Solar Chelsea SC ECNL G99	0	Dallas Sting ECNL G99	0	ECNL U14	2.07	0.372
14551	2013-10-13	Solar Chelsea SC ECNL G99	3	TSC Hurricane ECNL G99	0	ECNL U14	2.96	0.241
14222	2013-10-05	Solar Chelsea SC ECNL G99	0	AHFC ENCL G99	0	ECNL U14	1.47	0.367
13910	2013-09-22	TSC Hurricane ECNL G99	0	Solar Chelsea SC ECNL G99	0	ECNL U14	0.24	2.960
13553	2013-09-14	D'Feeters SC ECNL G99	1	Solar Chelsea SC ECNL G99	4	ECNL U14	0.72	1.549
13480	2013-09-08	Texas Rush ECNL G99	1	Solar Chelsea SC ECNL G99	3	ECNL U14	0.51	2.170
13342	2013-09-07	Challenger SC ECNL G99	0	Solar Chelsea SC ECNL G99	2	ECNL U14	0.20	2.420